

JUNE 2024 LEASE OPPORTUNITIES RETAIL | OFFICE | INDUSTRIAL

RETAIL >>



**800 Franklin Boulevard,
Cambridge** *NEW

Unit B5 - 773 sq ft Rate: \$21.95/sq ft
Unit C9/10 - 1,934 sq ft Rate: \$20.00/sq ft

TMI: B5-\$13.92/sq ft C9/10-\$13.55/sq ft

DETAILS



**7 Grand Avenue,
Cambridge** *NEW

Unit 111 - 849 sq ft Rate: \$21.95/sq ft
Unit 109- 1,604 sq ft Rate: \$21.95/sq ft

TMI: \$8.30/sq ft + utilities

DETAILS



**16 Water Street N,
Cambridge** *NEW

Size: 719 sq ft

Rate: \$2,100/month gross

TMI: + utilities

DETAILS



**15 Pearson Street,
Kitchener** *NEW

Unit 100 - 1,855 sq ft Rate: \$25.00/sq ft
Unit 103 - 3,000 sq ft Rate: \$25.00/sq ft

TMI: \$15.00/sq ft + utilities

DETAILS



**11 - 65 University Avenue E,
Waterloo** *NEW

Size: 1,637 sq ft

Rate: \$32.00/sq ft net

TMI: \$16.50/sq ft + utilities

DETAILS



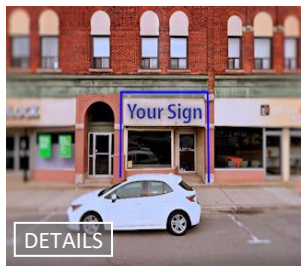
**85 King Street N,
Waterloo** *NEW

Size: 2,856 sq ft

Rate: \$36.00/sq ft net

TMI: \$17.00/sq ft + utilities

DETAILS



**16 Water Street S,
Cambridge**

Size: 1,295 sq ft

Rate: \$2,950/month

TMI: + utilities

DETAILS



**27 Quebec Street,
Guelph**

Size: 2,149 sq ft

Rate: \$22.50/sq ft net

TMI: \$5.00/sq ft + utilities

DETAILS



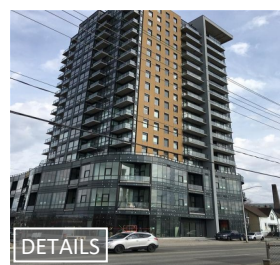
**1116 - 100 Conestoga College Blvd,
Kitchener**

Size: 4,036 sq ft

Rate: \$12.95/sq ft net

TMI: \$9.00/sq ft + utilities

DETAILS



**A - 100 Victoria Street S,
Kitchener**

Size: 2,508 sq ft

Rate: \$24.00/sq ft net

TMI: \$13.00/sq ft + utilities

DETAILS

JUNE 2024 LEASE OPPORTUNITIES RETAIL | OFFICE | INDUSTRIAL

RETAIL >>



720 Belmont Avenue W, Kitchener

Size: 1,277 sq ft
Rate: \$35.00/sq ft net
TMI: \$12.00/sq ft + utilities

DETAILS



55 Franklin Street S, Kitchener

Unit 1 - 1,800 sq ft Rate: \$20.95/sq ft
Unit 1A - 1,000 sq ft Rate: \$25.95/sq ft
TMI: \$12.00/sq ft + utilities

DETAILS



10 - 1373 Victoria Street N, Kitchener

Size: 7,627 sq ft
Rate: ~~—Under Contract—~~
TMI: ~~—Under Contract—~~

DETAILS



258 King Street N, Waterloo

Unit 8 - 2,100 sq ft Rate: \$22.00/sq ft
Unit 8&9 - 4,659 sq ft Rate: \$18.00/sq ft
TMI: \$10.00/sq ft + utilities

DETAILS



3 Regina Street N, Waterloo

Unit A - 5,113 sq ft Rate: \$15.00/sq ft net
Unit A3 - 1,850 sq ft Rate: \$15.00/sq ft net
TMI: \$9.50/sq ft - utilities inc.

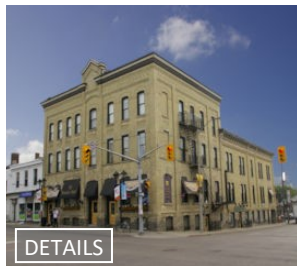
DETAILS



465 Phillip Street, Waterloo

Unit 10 - 1,318 sq ft Rate: \$28.00/sq ft net
Unit 13 - 1,992 sq ft Rate: \$24.95/sq ft net
TMI: \$17.12/sq ft + utilities

DETAILS



4 - 2 King Street N, Waterloo

Size: 3,318 sq ft
Rate: \$15.95/sq ft net
TMI: \$9.50/sq ft + utilities

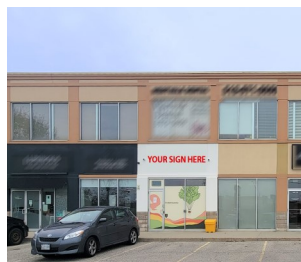
DETAILS



G1-220 King Street N, Waterloo

Size: 1,574 sq ft
Rate: \$40.00/sq ft net
TMI: \$24.00/sq ft + utilities

DETAILS



103 - 520 University Avenue W, Waterloo

Size: 979 sq ft
Rate: ~~—LEASED—~~
TMI: ~~—LEASED—~~



4169 King Street E, Kitchener

Size: 7,465 sq ft
Rate: \$20.00/sq ft net
TMI: \$11.00/sq ft + utilities

DETAILS

JUNE 2024 LEASE OPPORTUNITIES RETAIL | OFFICE | INDUSTRIAL

RETAIL >>



101A - 35 King Street N, Waterloo

Size: 2,400 sq ft
Rate: \$32.00/sq ft
TMI: \$12.00/sq ft + utilities

DETAILS



373 Bridge Street W, Waterloo

Unit 3 - 968 sq ft Rate: \$24.00/sq ft net
Unit 5 - 951 sq ft Rate: \$24.00/sq ft net

TMI: \$10.62/sq ft + utilities

DETAILS



H17 - 1067 Ontario Street, Waterloo

Size: 325 sq ft
Rate: \$2,925/month
TMI: utilities

DETAILS



140 Columbia Street W, Waterloo

Unit 101 - 4,376 sq ft Rate: \$25.00/sq ft
Unit 101A - 2,188 sq ft Rate: \$25.00/sq ft
Unit 102 - 1,726 sq ft Rate: \$25.00/sq ft

TMI: \$12.16/sq ft

DETAILS



24 King Street N, Waterloo

Size: 7,000 sq ft

Rate: _____
TMI: _____ **LEASED** _____

JUNE 2024

LEASE OPPORTUNITIES

RETAIL | OFFICE | INDUSTRIAL

OFFICE >>



283 Duke Street, Kitchener *NEW

206B - 2,244 sq ft Rate: \$18.00/sq ft net
 219-222 - 4,763 sq ft Rate: \$24.00/sq ft net
 301 - 1,627 sq ft Rate: \$18.00/sq ft net
 304 - 5,170 sq ft Rate: \$18.00/sq ft net
 306 - 1,681 sq ft Rate: \$18.00/sq ft net

DETAILS



15 Pearson Street Kitchener *NEW

Unit 200 - 4,000 sq ft Rate: \$18.95/sq ft
 Unit 201 - 889 sq ft Rate: \$18.95/sq ft
 Unit 202 - 2,500 sq ft Rate: \$18.95/sq ft
 Unit 300 - 10,369 sq ft Rate: \$18.95/sq ft

DETAILS

TMI: \$15.00/sq ft + utilities



780 King Street E, Cambridge

Size: 2,400 sq ft

Rate: \$14.95/sq ft net

TMI: \$5.85/sq ft + utilities

DETAILS



114 - 7 Grand Avenue S, Cambridge

Size: 1,337 sq ft

Rate: LEASED

TMI: _____

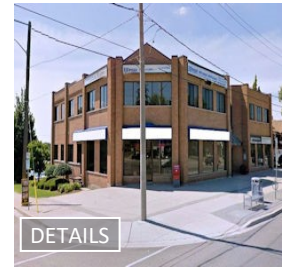


370 Highland Road W, Kitchener

Unit 15C - 4,154 sq ft Rate: \$15.00/sq ft
 Unit 15D - 2,442 sq ft Rate: \$15.00/sq ft
 Unit 15C/D - 6,596 sq ft Rate: \$15.00/sq ft

TMI: \$12.00/sq ft + utilities

DETAILS



2D - 625 King Street E, Kitchener

Size: 1,394 sq ft

Rate: \$13.00/sq ft net

TMI: \$13.30/sq ft

DETAILS



203 - 1145 King Street E, Kitchener

Size: 952 sq ft

Rate: \$12.95/sq ft net

TMI: \$14.67/sq ft + utilities

DETAILS



2 - 340 King Street W, Kitchener

Size: 5,649 sq ft

Rate: \$10.00/sq ft net

TMI: \$9.00/sq ft + utilities

DETAILS



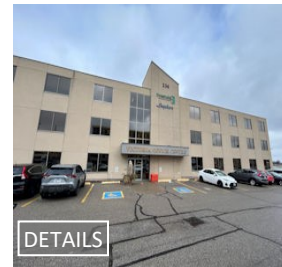
678 - 692 Belmont Avenue W, Kitchener

Building 684 Belmont Ave W:
 Unit 202 - 1,157 sq ft Rate: \$18.00/sq ft

Building 690 Belmont Ave W:
 Unit 302 - 1,205 sq ft Rate: \$19.50/sq ft

TMI: \$12.59/sq ft

DETAILS



1A - 236 Victoria Street N, Kitchener

Size: 3,526 sq ft

Rate: \$14.50/sq ft net

TMI: \$14.34/sq ft

DETAILS

JUNE 2024

LEASE OPPORTUNITIES

RETAIL | OFFICE | INDUSTRIAL

OFFICE >>



3E - 737 Belmont Avenue W, Kitchener

Size: 100 sq ft

Rate: \$850.00/month

TMI: + utilities

DETAILS



647 King Street W, Kitchener

Size: 2,177 sq ft

Rate:

LEASED

TMI:



3 - 1440 King Street N, St. Jacobs

Size: 1,797 sq ft

Rate: \$17.95/sq ft net

TMI: \$8.96/sq ft + utilities

DETAILS



2F - 120 Randall Drive, Waterloo

Size: 5,331 sq ft

Rate: \$9.95/sq ft net

TMI: \$6.20/sq ft + utilities

DETAILS



36 - 620 Davenport Road, Waterloo

Size: 2,516 sq ft

Rate: \$19.95/sq ft net

TMI: \$7.50/sq ft + utilities

DETAILS



5&6 - 620 Davenport Road, Waterloo

Size: 2,106 sq ft

Rate: \$17.95/sq ft net

TMI: \$7.50/sq ft + utilities

DETAILS



255 King Street N, Waterloo

201 - 1,813 sq ft Rate: \$17.95/sq ft net

207 - 7,742 sq ft Rate: \$16.95/sq ft net

302/303 - 3,500 sq ft Rate: \$17.95/sq ft net

TMI: \$15.50/sq ft + utilities

DETAILS



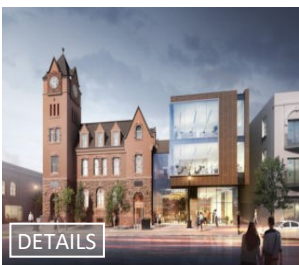
55 Erb Street E, Waterloo

Unit 301 - 1,889 sq ft Rate: \$16.95/sq ft

Unit 323 - 1,241 sq ft Rate: \$16.95/sq ft

TMI: \$18.50/sq ft

DETAILS



301 - 35 King Street, Waterloo

Size: 9,133 sq ft

Rate: \$25.00/sq ft net

TMI: \$10.00/sq ft + utilities

DETAILS



140 Columbia Street W, Waterloo

Unit 203 - 4,630 sq ft Rate: \$14.95/sq ft

Unit 201A - 2,500 sq ft Rate: \$14.95/sq ft

Unit 201B - 1,500 sq ft Rate: \$14.95/sq ft

TMI: \$12.16/sq ft + utilities

DETAILS

JUNE 2024 LEASE OPPORTUNITIES RETAIL | OFFICE | INDUSTRIAL

OFFICE >>



465 Phillip Street, Waterloo

Unit 203A - 1,728 sq ft Rate: \$14.95/sq ft
Unit 204B - 1,444 sq ft Rate: \$14.95/sq ft
203A&204B - 3,172 sq ft Rate: \$14.95/sq ft

TMI: \$22.57/sq ft + utilities inc.

DETAILS



1102 - 20 Erb Street W, Waterloo

Size: 1,235 sq ft

Rate: \$16.50/sq ft net

TMI: \$18.70/sq ft + utilities

DETAILS



20 Erb Street W, Waterloo

Unit 203 - 3,004 sq ft Rate: \$15.95/sq ft
Unit 501 - 889 sq ft Rate: \$15.95/sq ft
Unit 1202 - 1,849 sq ft Rate: \$15.95/sq ft
Unit 1204 - 2,789 sq ft Rate: \$15.95/sq ft

TMI: \$18.70/sq ft + utilities

DETAILS



12 Dupont Street W, Waterloo

Unit 2 - 650 sq ft Rate: \$1,600/month

Unit 2B - 300 sq ft Rate: \$850/month

TMI: + utilities

DETAILS



22 King Street S, Waterloo

Unit 204 - 1,392 sq ft Rate: \$15.95/sq ft net
Unit 501 - 1,128 sq ft Rate: \$14.00/sq ft net
Unit 502 - 1,862 sq ft Rate: \$14.00/sq ft net
Unit 504 - 1,890 sq ft Rate: \$14.00/sq ft net

TMI: \$19.00/sq ft

DETAILS

INDUSTRIAL >>



8 - 510-520 Thompson Drive, Cambridge

***NEW**

Size: 2,797 sq ft

Rate: \$11.49/sq ft net

TMI: \$6.28/sq ft + utilities

DETAILS



121 - 283 Duke Street, Kitchener

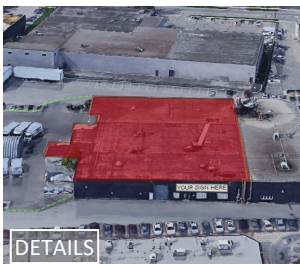
***NEW**

Size: 2,640 sq ft

Rate: \$16.00/sq ft net

TMI:

DETAILS



35 University Avenue, Waterloo

***NEW**

Size: 34,976 sq ft

Rate: \$9.95/sq ft net

TMI: \$3.95/sq ft + utilities

DETAILS



A - 2191 Arthur Street N, Elmira

Size: 8,500 sq ft

Rate: \$12.00/sq ft net

TMI: \$2.00/sq ft

DETAILS

JUNE 2024

LEASE OPPORTUNITIES

RETAIL | OFFICE | INDUSTRIAL

INDUSTRIAL >>



**A9 - 1535 Snyder's Road E,
Petersburg**

Size: 3,170 sq ft

Rate: **LEASED**

TMI:



**33G - 620 Davenport Road,
Waterloo**

Size: 2,768 sq ft

Rate: \$17.95/sq ft net

TMI: \$7.50/sq ft + utilities

[DETAILS](#)



**82 Woolwich Street,
Woolwich**

Size: 0.568 acres

Rate: \$3,500/month

Contact For Additional Information:

www.coupalmarkou.com

**Coupal Markou Commercial
Real Estate Inc., Brokerage**

150 King Street South
Waterloo, Ontario N2J 1P6

519 742 7000 → Office
519 742 7070 → Fax

John Markou
Broker, Principal
john@coupalmarkou.com
Office 519-742-7000 x 102

Matt Dickson
Sales Representative
matt@coupalmarkou.com
Office 519-742-7000 x 104

Mike Conrad
Sales Representative
mike@coupalmarkou.com
Office 519-742-7000 x 105

Peter Kruschen
Sales Representative
peter@coupalmarkou.com
Office 519-742-7000 x 106

Theo Papadopoulos
Sales Representative
theo@coupalmarkou.com
Office 519-742-7000 x 103

Christopher Coupal
Broker of Record, Principal
christopher@coupalmarkou.com
Office 519-742-7000 x 101

Brooks Way
Broker
brooks@coupalmarkou.com
Office 519-742-7000 x 112

This disclaimer shall apply to Coupal Markou Commercial Real Estate Inc., Brokerage, to include all employees and independent contractors. The information set out herein is for advertising purposes, and any images, assumptions, estimates and property details have been obtained from sources deemed to be reliable. No warranty or representation is made as to its accuracy, correctness and completeness of the information, being subject to errors, omissions, conditions, prior sale/lease, withdrawal or other changes without notice. The recipient of the information should conduct its own inquiries and investigations prior to placing any reliance upon the information. MLS



Commercial Real Estate Inc., Brokerage