

MAY 2024

SALE OPPORTUNITIES

INVESTMENT | COMMERCIAL | LAND

INVESTMENT >>



295-301 Lancaster Street W, Kitchener

Availability: 5,400 sq ft
Property Size: 0.190 acres
Sale Price: \$1,750,000

[DETAILS](#)



42 Groff Place, Kitchener

Availability: 15,000 sq ft
Property Size: 1.119 acres
Sale Price: \$3,000,000

[DETAILS](#)



63 Courtland Avenue E, Kitchener

Availability: 40,000+ sq ft
Property Size: ~~—Under Contract—~~
Sale Price: ~~—Under Contract—~~

[DETAILS](#)



1193 Queens Bush Road Wellesley

Availability: 8,705 sq ft
Property Size: 0.202 acres
Sale Price: \$795,000

[DETAILS](#)



21 King Street N, Waterloo

Availability: 1,800 sq ft
Property Size: 0.042 acres
Sale Price: \$1,309,000

[DETAILS](#)

MAY 2024

SALE OPPORTUNITIES

INVESTMENT | COMMERCIAL | LAND

COMMERCIAL >>



**57 Moore Ave,
Kitchener**
Availability: 4,500
Property Size: 0.195 acres
Sale Price: \$1,480,000

DETAILS

*NEW



**298 Highland Road,
Kitchener**
Availability: 12,692 sq ft
Property Size: 1.027/aces
Sale Price: \$5,500,000

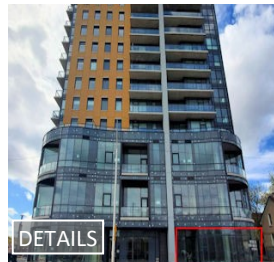
DETAILS

*NEW



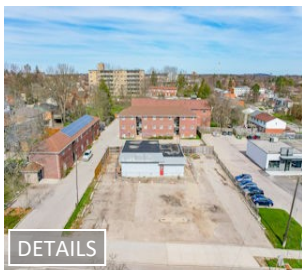
**29 King Street E,
Kitchener**
Availability: 30,341 sq ft
Property Size: 0.321 acres
Sale Price: \$6,200,000

DETAILS



**A - 100 Victoria Street S,
Kitchener**
Availability: 2,508 sq ft approx.
Property Size: 0.22 acres
Sale Price: \$999,990

DETAILS



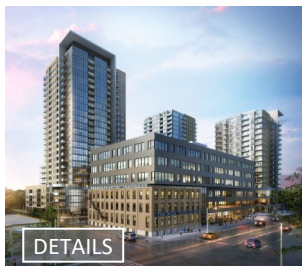
**280 Highland Road E,
Kitchener**
Availability: 1,632 sq ft
Property Size: 0.253/aces
Sale Price: \$1,250,000

DETAILS



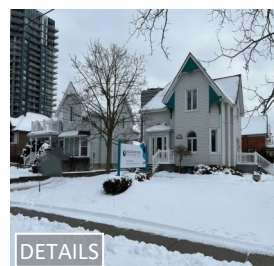
**B12 - 490 Dutton Drive,
Waterloo**
Availability: 2,260 sq ft
Property Size: ~~—Under Contract—~~
Sale Price: ~~—Under Contract—~~

DETAILS



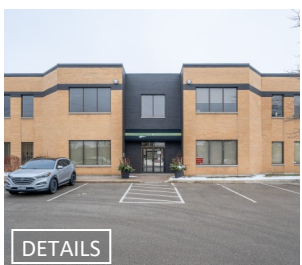
**108 Garment Street S,
Kitchener**
Unit D2 - 1,296 sq ft Price: \$623,900
Unit D4 - 1,492 sq ft Price: \$705,900

DETAILS



**45 Allen Street W,
Waterloo**
Availability: 1,447 sq ft
Property Size: ~~—Under Contract—~~
Sale Price: ~~—Under Contract—~~

DETAILS



**155 Frobisher Drive,
Waterloo**
UnitG1_14: 1,116 sq ft Price: \$489,900
UnitH2_9/10: 2,490 sq ft Price: \$949,900
Unit J1_1&2: 2,342 sq ft Price: \$999,990
UnitJ2_3: 1,205 sq ft Price: \$499,900

DETAILS

MAY 2024

SALE OPPORTUNITIES

INVESTMENT | COMMERCIAL | LAND

LAND >>



**84 Elora Street,
Clifford**

Property Size: 1,000 sq ft approx.

Availability: 14.55/ acres

Sale Price: \$1,500,000



**1795 & 1805 Sawmill Road,
Woolwich**

Property Size: 1,000 sq ft approx.

Availability: 14.55/ acres

Sale Price: \$2,495,000

Contact For Additional Information:

www.coupalmarkou.com

**Coupal Markou Commercial
Real Estate Inc., Brokerage**

150 King Street South
Waterloo, Ontario N2J 1P6

519 742 7000 → Office
519 742 7070 → Fax

John Markou

Broker, Principal

john@coupalmarkou.com

Office 519-742-7000 x 102

Matt Dickson

Sales Representative

matt@coupalmarkou.com

Office 519-742-7000 x 104

Mike Conrad

Sales Representative

mike@coupalmarkou.com

Office 519-742-7000 x 105

Peter Kruschen

Sales Representative

peter@coupalmarkou.com

Office 519-742-7000 x 106

Theo Papadopoulos

Sales Representative

theo@coupalmarkou.com

Office 519-742-7000 x 103

Christopher Coupal

Broker of Record, Principal

christopher@coupalmarkou.com

Office 519-742-7000 x 101

Brooks Way

Broker

brooks@coupalmarkou.com

Office 519-742-7000 x 112

This disclaimer shall apply to Coupal Markou Commercial Real Estate Inc., Brokerage, to include all employees and independent contractors. The information set out herein is for advertising purposes, and any images, assumptions, estimates and property details have been obtained from sources deemed to be reliable. No warranty or representation is made as to its accuracy, correctness and completeness of the information, being subject to errors, omissions, conditions, prior sale/lease, withdrawal or other changes without notice. The recipient of the information should conduct its own inquiries and investigations prior to placing any reliance upon the information. MLS

Coupal Markou

Commercial Real Estate Inc., Brokerage