

# 620

**FOR LEASE**  
**SERVICE/COMMERCIAL BUILDING**

**DAVENPORT ROAD, UNIT 5&6, WATERLOO**



## AVAILABILITY

5&6 - 2,106 sq ft

## LEASE RATE

\$17.95/sq ft net

## ADDITIONAL RENT

\$7.50/sq ft

## ZONING

E1-27

## POSSESSION

MAY 2024

- \* Located on the corner of Davenport Rd, Northfield Drive East and Frobisher Drive in the Northland Business Park
- \* 2,106 sq ft of Ground floor Sales/Service Commercial Space available in high profile building
- \* Fully air conditioned
- \* On bus route and near LRT station at Conestoga Mall
- \* Pylon and Façia signage available
- \* Ample, free on-site parking
- \* Close to Conestoga expressway/Hwy 85 with easy access to surrounding towns: Elmira, Kitchener and Guelph

**MICHAEL CONRAD**  
SALES REPRESENTATIVE  
[MIKE@COUPALMARKOU.COM](mailto:MIKE@COUPALMARKOU.COM)  
519-742-7000 x 105

**MATT DICKSON**  
SALES REPRESENTATIVE  
[MATT@COUPALMARKOU.COM](mailto:MATT@COUPALMARKOU.COM)  
519-742-7000 x 104

**COUPAL MARKOU COMMERCIAL  
REAL ESTATE INC**  
150 KING STREET SOUTH  
WATERLOO, ONTARIO N2J 1P6  
OFFICE 519-742-7000  
FAX 519-742-7070



Commercial Real Estate Inc., Brokerage

[www.coupalmarkou.com](http://www.coupalmarkou.com)

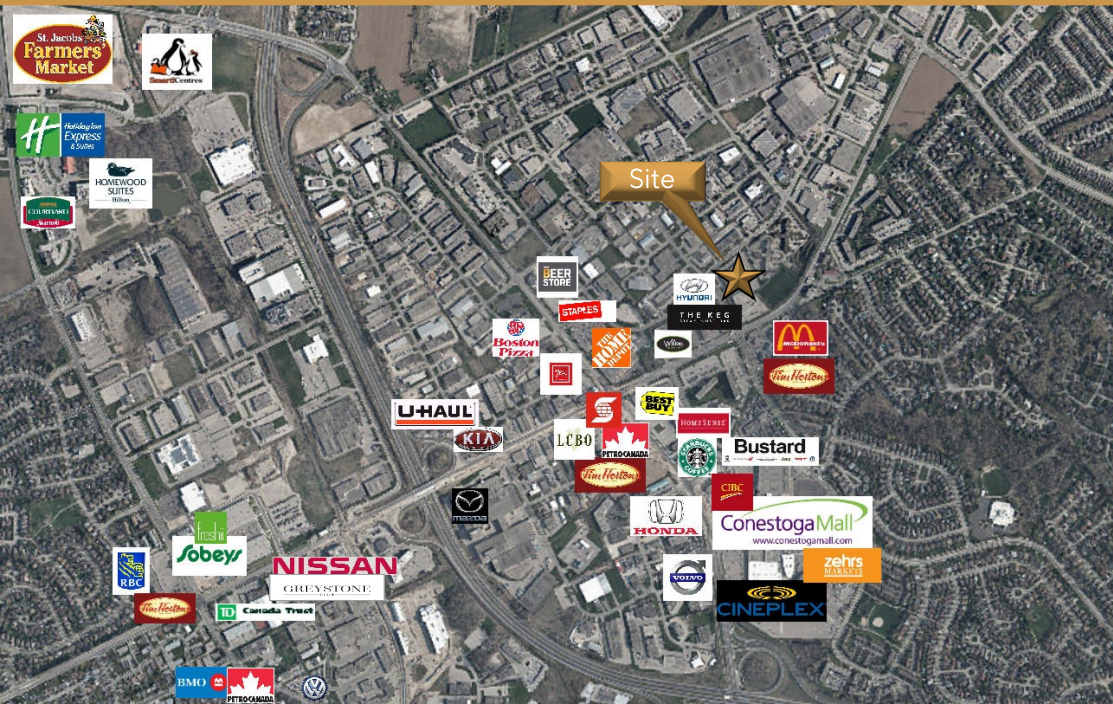
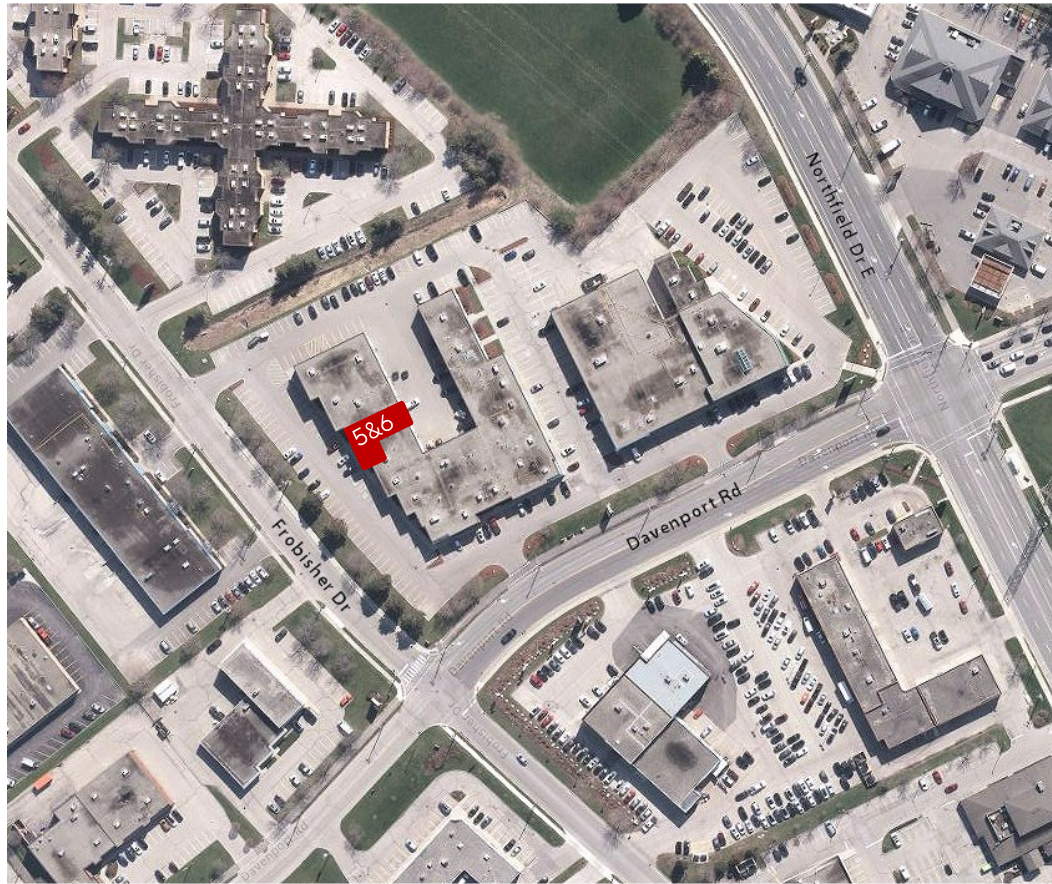
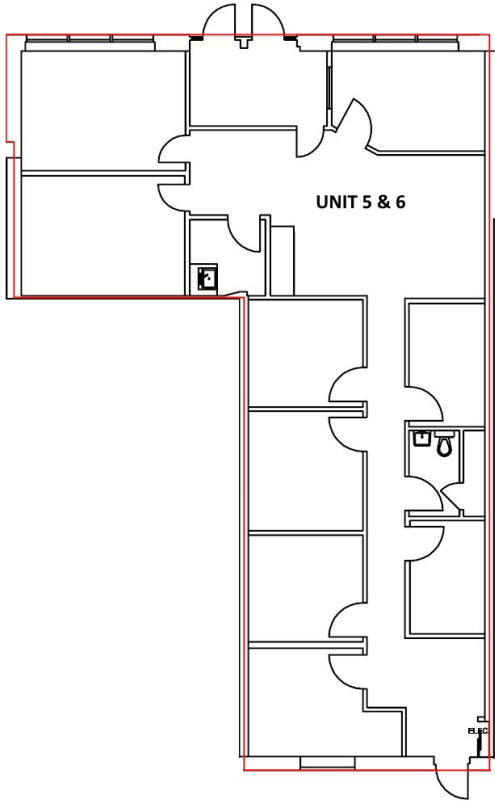


# 620

## FOR LEASE SERVICE/COMMERCIAL BUILDING

### DAVENPORT ROAD, UNIT 5&6, WATERLOO

5&6 - 2,106 sq ft



**MICHAEL CONRAD**  
SALES REPRESENTATIVE  
[MIKE@COUPALMARKOU.COM](mailto:MIKE@COUPALMARKOU.COM)  
519-742-7000 x 105

**MATT DICKSON**  
SALES REPRESENTATIVE  
[MATT@COUPALMARKOU.COM](mailto:MATT@COUPALMARKOU.COM)  
519-742-7000 x 104

**COUPAL MARKOU COMMERCIAL  
REAL ESTATE INC**  
150 KING STREET SOUTH  
WATERLOO, ONTARIO N2J 1P6  
OFFICE 519-742-7000  
FAX 519-742-7070



This disclaimer shall apply to Coupal Markou Commercial Real Estate Inc., Brokerage, to include all employees and independent contractors. The information set out herein is for advertising purposes, and any images, assumptions, estimates and property details have been obtained from sources deemed to be reliable. No warranty or representation is made as to its accuracy, correctness and completeness of the information, being subject to errors, omissions, conditions, prior sale / lease, withdrawal or other changes without notice. The recipient of the information should conduct its own inquiries and investigations prior to placing any reliance upon the information. MLS

[www.coupalmarkou.com](http://www.coupalmarkou.com)